



In this season of navigating life with COVID, gathering in-person demands wisdom. We are continuing to ask God for guidance. We have identified three questions that we are using to apply wisdom related to when we should or should not meet in person.

The three questions are:

- What are we hearing from God?
- What would be best for the Genesis community?
- What is happening in our area with the community spread of COVID?

This document outlines how we will use information regarding the spread of Covid-19 to determine our risk level. We also outline our procedures and protocols to keep our building Covid safe. As we move forward, we will continue to listen to God for wisdom and adjust our procedures as necessary to keep our community safe.

*This is a working document and can be changed at the churches discretion.*

Please see **Chart A** for the Covid Safe Building Criteria. The Covid-19, case per 100,000 rate is used to determine the average in the tri-county area as listed on the [Bridge MI website](#). (Oakland + Macomb + Wayne = X / 3 = Covid Number) Current Covid Number is **79**, as of 4/5/21

## Covid Procedures

### **Service Registration**

All in-person services require preregistration on the Planning Center Registrations page. The pages will be communicated via e-blast, website, and social media. The service will be limited to 100 attendees per Chart B. Registration will be active [here](#).

### **Entering the Building**

Upon entering the building all attendees will be temperature checked and given hand sanitizer. Masks are required to enter the building. Signs will be displayed at both entrances stating the Health Department recommendations. If an attendee is exhibiting any of the following symptoms they will be asked to return/stay home and join us for service via Zoom.

- New cough
- Fever
- Flu like symptoms
- Has been recently around someone who has tested positive for Covid-19.
- Unable or unwilling to wear a mask.

### **Seating for Service**

All seating in the sanctuary will be organized in family/household groups. Groups will be seated using every other row, utilizing opposite ends of the pews. Attendees are expected to stay in their seats unless they need to use the restroom. When leaving the sanctuary to use the restroom please proceed to the front of the sanctuary and exit out the south west door. Masks

are to be kept on while in the sanctuary. In the event that the sanctuary is filled, the balcony will be also used utilizing the same seating system.

### **Exiting the Sanctuary**

When service ends, ushers will dismiss rows. Attendees will proceed to the South West door at the front to exit the sanctuary. Attendees will then be asked to proceed to the parking lot doors to immediately exit the building. Balcony groups will be released from the balcony and asked to walk through the sanctuary to the front South west doors to exit.

### **Lobby**

Currently, at this time we cannot allow any congregating in the lobby. Attendees are expected to leave the building immediately following service. We will not have any cafe tables. Chairs will be spaced 6ft apart around the lobby for those in need of them. At this time, we will not be offering any coffee or refreshments in the lobby.

### **Worship Music**

Worship leaders and musicians should all be masked and staged 6 feet apart at all times.

### **Restrooms**

#### Womens

The women's room will be limited to two occupants at a time. The middle sink will be taped off to provide social distancing. To enter the women's room people will proceed to enter by the Garden Desk.

#### Mens

The mens rooms will be limited to two people at a time. One of the urinals will be taped off to provide for social distancing. To enter the men's room people should proceed around the coffee bar to enter the hall way near the water fountains.

#### Drinking Fountains

Drinking Fountains will be taped off until further notice.

Please see **Chart C** for the people traffic flow of the building.

### **Guest Relations**

#### Coffee / Refreshments

**At this time, we will NOT be offering any Coffee or Refreshments.** When we do decide to resume use of the coffee bar the following procedures will be utilized.

All cups of coffee, hot water etc will be filled by a (masked and gloved) volunteer. Cups will be set on the table ready to go. A second table will be provided for guests to prepare their own coffee / drink. Hand sanitizer will be provided at the tables. No food will be provided during services at this time.

#### Ushers

Ushers will provide a QR code with the Sunday bulletin. They will direct family groups to the next available pew to sit. Hand sanitizer stations will be located at the entrance and exit of the sanctuary.

#### Offering

A basket will be placed at the entry and exit of the sanctuary, with proper signage. We will allow people to put their donations into the offering as they enter or exit the sanctuary. No passing of the offering plate will happen during the service.

### Communion

Individually packaged communion supplies will be provided. When we are practicing communion, the prepackaged communion will be handed out to the attendees prior to being seated. Communion will not be taken from tables at the front or back of the church at this time.

### **Children's Ministry**

All Children's ministry safety protocols will be identified by the Family Ministry team.

### **Cleaning and Sanitizing**

Cleaning will be done in accordance with the CDC guidelines. Click here for details.  
<https://www.cdc.gov/coronavirus/2019-ncov/community/faith-based.html>

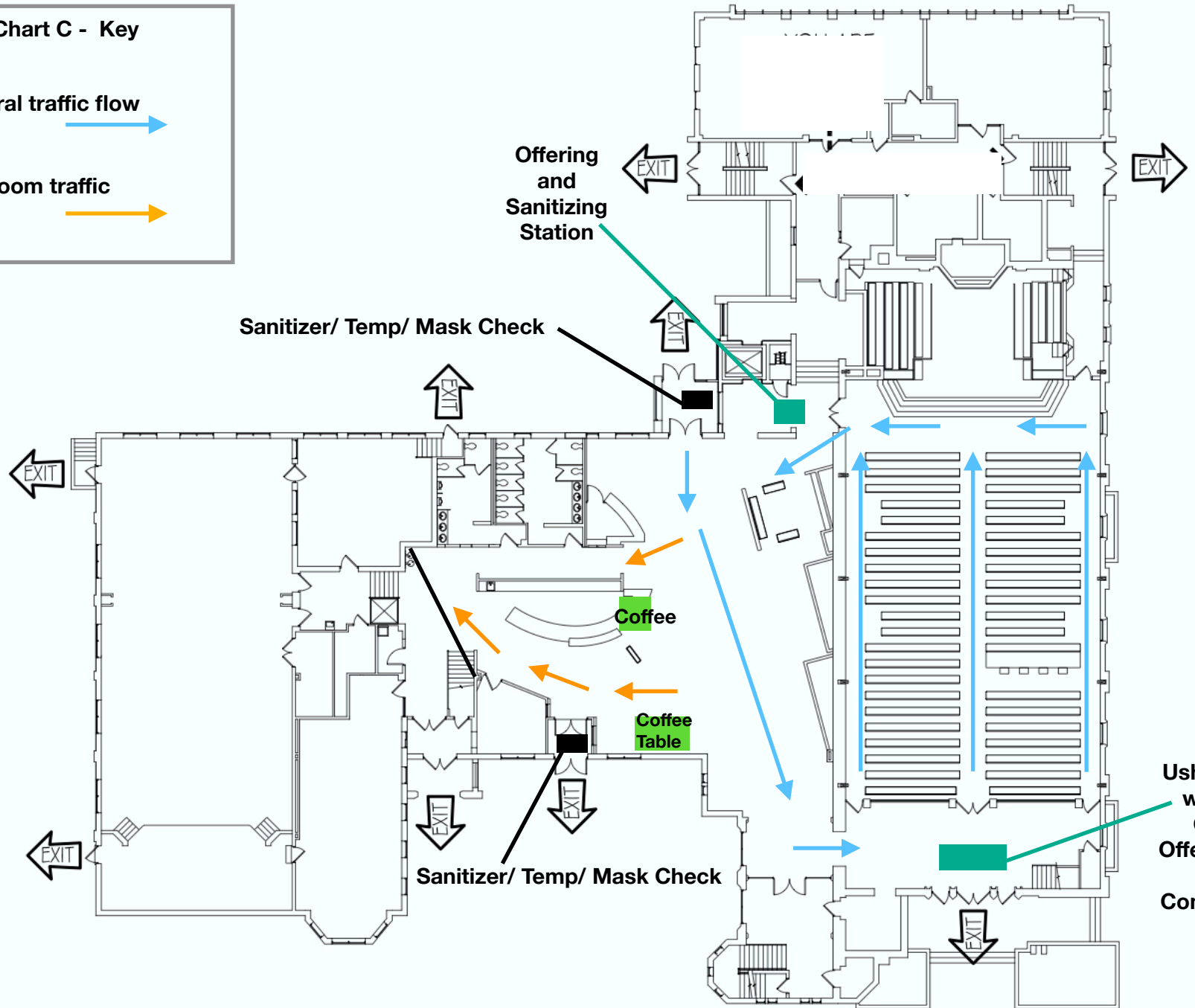
**Chart B** - Occupancy Guidelines (limits based on social distancing and square footage)

<b>Building Area</b>	<b>Total Number of Occupants</b>
Sanctuary	100 people
Lobby	120 people
South Hall - Carpet Area	40 people
South Hall - Tile Area	30 people

## Genesis the Church Covid Safe Building Criteria

Risk Level	Positive Covid per 100,000 in the Tri-county Area	Building Status	Number of people permitted at in-person gathering	Protocol to be follows	Genesis Church Service Options
<b>A</b> All Good	10 or less	Open	Groups of 50 +	Mask required & Covid safe protocols in building	Indoor services acceptable with all precautions and protocols in place. Garden and Treehouse services
<b>B</b> Be Careful	10-19	Open	Number of approved guest based on space utilized	Mask required & All Covid Safe building followed	Service outdoors (weather permitting) 100 person limit inside service with protocols are in place ahead of time. Treehouse runs K-5 service Adjust Garden service
<b>C</b> Caution	20-49	Open by prior reservation only	Number of approved guest based on space utilized	Mask required & All Covid Safe building followed	Service Outdoors (weather permitting) 30 person limit hybrid indoor service No Children's services Zoom Service w/ poor Weather
<b>D</b> Don't Gather	50 or more	Admin and building tenets only	Individuals allowed in building no groups	Mask required & All Covid Safe building followed	No in person services
<b>E</b> Extreme Cleaning	Positive Case in the Building	Closed	No meetings for 7 days to allow full cleaning.	Cleaning required	No in person services

**Chart C - Key**



# EMERGENCY EXIT ROUTES

GENESIS CHURCH - FIRST FLOOR